

BROADCAST LED FLOODLIGHT

PID: SL923FLF



APPLICATIONS

ALLEY WAYS
WALKWAYS
MAN DOORS
FLAG POLES
EXTERIOR OF BUILDINGS

SPECIFICATIONS

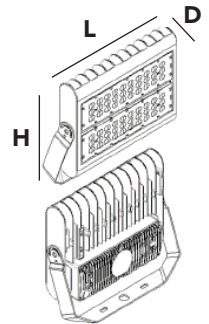
- **Construction:** ADC12 Aluminum heat sink; Bronze powder coating; High-lumen clear lens, LUMILEDS LED chips;
- **Operating Temperature:** -40°F to 104°F (-40°C to 40°C)
- **Energy Data:** Driver: 100-277V; Power Factor >.90; THD <20%;
- **Mounting:** Trunnion, Slipfitter, Extruded arm, Yoke, Knuckle
- **Certifications:** UL Listed; IP65; LM79 tested
- **Rated Life:** 50,000 hours
- **Warranty:** 5 years

PRODUCT DETAILS

| Watts | Input | Kelvin ¹ | Lumens ^{1,2} | Dimming | Beam Angle | CRI |
|-------|---------------|---------------------|-----------------------|-------------|------------|-----|
| 15W | NOT AVAILABLE | | 1,663 | | | |
| 30W | 100-277V | 5,000K | 3,718 | Non-Dimming | 90°x120° | >80 |
| 50W | | | 6,179 | | | |
| 80W | | | 10,342 | | | |

DIMENSIONS

| Watts | Length | Width | Height |
|-------|--------|-------|--------|
| 15W | 4.5" | 1.4" | 4.6" |
| 30W | 7" | 1.5" | 6.5" |
| 50W | 9" | 1.7" | 7.5" |
| 80W | 13.4" | 3.4" | 11.7" |



MOUNTING OPTIONS

YOKE

Available for 30W, 50W, 80W



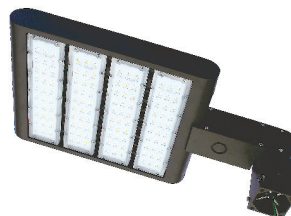
KNUCKLE

Available for 15W, 30W



SLIP FITTER

Available for 80W



TRUNNION

Available for 80W



EXTRUDED ARM

Available for 80W

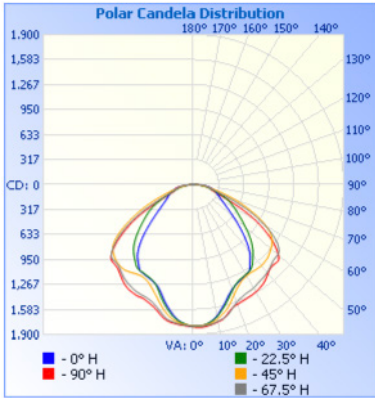


1. CCT range complies with ANSI C78.377-2008

2. Rated average life based on engineering testing and probability analysis.

LM79 REPORT

LM report based on 80W data



| Distance | Center Beam fc | Beam Width |
|----------|----------------|-------------------|
| 17.0ft | 6.21 fc | 33.8 ft 56.9 ft |
| 34.0ft | 1.55 fc | 67.7 ft 113.7 ft |
| 51.0ft | 0.69 fc | 101.5 ft 170.6 ft |
| 68.0ft | 0.39 fc | 135.3 ft 227.4 ft |
| 85.0ft | 0.25 fc | 169.1 ft 284.3 ft |
| 102.0ft | 0.17 fc | 203.0 ft 341.1 ft |

■ Vert. Spread: 89.7°
■ Horiz. Spread: 118.2°

| Zonal Lumen Summary | | | |
|---------------------|---------|--------|-------------|
| Zone | Lumens | % Lamp | % Luminaire |
| 0-30 | 1,278.6 | 26.1% | 26.1% |
| 0-40 | 2,135.3 | 43.5% | 43.5% |
| 0-60 | 3,967.5 | 80.9% | 80.9% |
| 60-90 | 931.6 | 19% | 19% |
| 70-100 | 367.7 | 7.5% | 7.5% |
| 90-120 | 2.1 | 0% | 0% |
| 0-90 | 4,899.2 | 99.9% | 99.9% |
| 90-180 | 6.8 | 0.1% | 0.1% |
| 0-180 | 4,905.9 | 100% | 100% |

| Lumens Per Zone | | | | | |
|-----------------|--------|---------|---------|--------|---------|
| Zone | Lumens | % Total | Zone | Lumens | % Total |
| 0-10 | 167.6 | 3.4% | 90-100 | 1.2 | 0% |
| 10-20 | 450.2 | 9.2% | 100-110 | 0.2 | 0% |
| 20-30 | 660.7 | 13.5% | 110-120 | 0.7 | 0% |
| 30-40 | 856.7 | 17.5% | 120-130 | 0.9 | 0% |
| 40-50 | 951.1 | 19.4% | 130-140 | 1.1 | 0% |
| 50-60 | 881.2 | 18.0% | 140-150 | 1.0 | 0% |
| 60-70 | 565.2 | 11.5% | 150-160 | 0.9 | 0% |
| 70-80 | 267.1 | 5.4% | 160-170 | 0.6 | 0% |
| 80-90 | 99.4 | 2.0% | 170-180 | 0.2 | 0% |

ORDER EXAMPLE:

| | | | | | | | | |
|------------|-------------------------------|-------------|-------------------|-------------------|-------------------------|--------------|-----------------------------|---|
| SL923FLF | 15W | SU | 5000 | C | 120 | I | N | O |
| PRODUCT ID | WATTAGE: 15W 30W 80W | SU=100-277V | CCT: 50K=5000K | LENS: C= Clear | Beam Angle: 120=120° | I = Internal | N= NON-DIMMING D=DIMMING | KM = Knuckle YM = Yoke TM = Trunnion EA = Extruded Arm SF = Slip Fitter |

The Straits Lighting Company is constantly developing and improving its products. For this reason, all product descriptions in this brochure are intended as a general guide, and we may change specifications from time to time in the interest of product development, without prior notification or public announcement. All descriptions in this publication present only general particulars of the goods to which they refer and shall not form part of any contract. Data in this guide has been obtained in controlled experimental conditions. However, The Straits Lighting Company cannot accept any liability arising from the reliance on such data to the extent permitted.