

APPLICATIONS

Parking structures, storage areas, shopping area walkways, entryways, and low level security.

FEATURES

- Sealed die-casting prole for indoor and outdoor applications.
- Voltage is 120-277V & 347V.
- Lumen output from 3500-11600lm with efficacy up to 129lm/W.
- Optional Parking Garage Photometry or Low Bay Photometry as per application.
- Increase energy savings with bi-level Motion sensor.
- Replacing 100W MH and 175W MH.
- Operating temperature is -40°C to 45°C(-40°F to 113°F).
- UL wet location and DLC qualified.



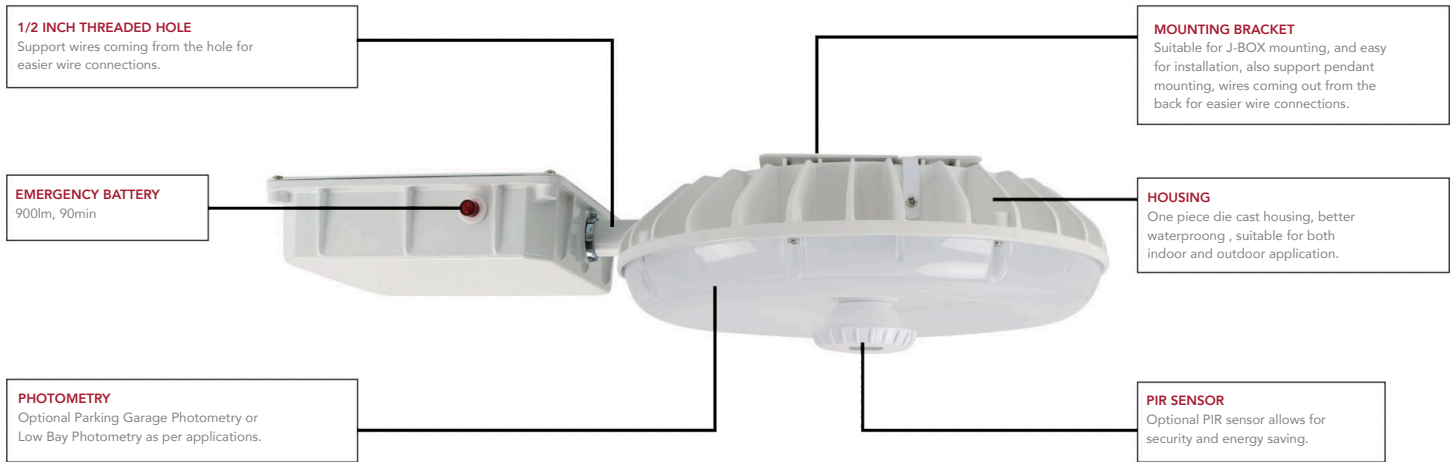
30W/45W/50W/60W/65W



30W/45W/50W/60W/65W



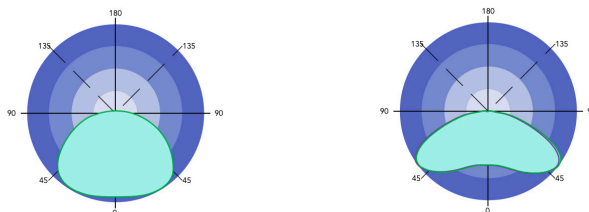
90W



PHOTOMETRICS

CHOOSE YOUR OPTICAL DISTRIBUTION

Each optic is designed for a specific purpose. The general distribution allows a wash of light in any application. In addition, we designed an optic specially for parking garage.



PERFORMANCE DATA

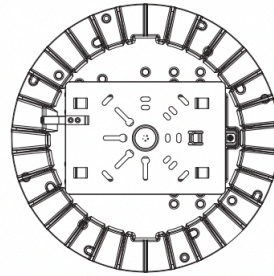
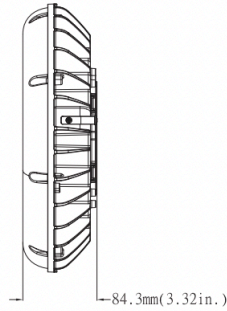
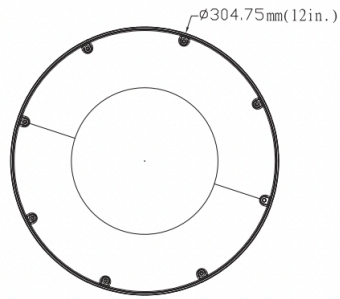
SYSTEM WATTS	PHOTOMETRY	VOLTAGE	4000K(70CRI)		5000K(70CRI)	
			LUMENS	LPW	LUMENS	LPW
30W	Parking Garage	120-277VAC	3500lm	117lm/W	3600lm	120lm/W
	Low Bay	120-277VAC	3800lm	127lm/W	3800lm	127lm/W
45W	Parking Garage	120-277VAC	4900lm	109lm/W	5000lm	111lm/W
	Low Bay	120-277VAC	5500lm	122lm/W	5500lm	122lm/W
50W	Parking Garage	347VAC	4900lm	98lm/W	5000lm	100lm/W
	Low Bay	347VAC	5500lm	110lm/W	5500lm	110lm/W
60W	Parking Garage	120-277VAC	7000lm	117lm/W	7100lm	118lm/W
	Low Bay	120-277VAC	7600lm	127lm/W	7600lm	127lm/W
65W	Parking Garage	347VAC	7000lm	108lm/W	7100lm	109lm/W
	Low Bay	347VAC	7600lm	117lm/W	7600lm	117lm/W
90W	Parking Garage	120-277VAC	11400lm	127lm/W	11600lm	129lm/W

ELECTRICAL DATA

NUMBER OF DRIVERS	DRIVER CURRENT (MA)	NOMINAL POWER (W)	INPUT VOLTAGE (V)	CURRENT (AMPS)
1	760	30	120	0.25
		30	208	0.14
		30	240	0.13
		30	277	0.11
1	1110	45	120	0.38
		45	208	0.22
		45	240	0.19
		45	277	0.16
		50	347	0.14
1	1500	60	120	0.50
		60	208	0.29
		60	240	0.25
		60	277	0.22
		65	347	0.19
1	2270	90	120	0.75
		90	208	0.43
		90	240	0.38
		90	277	0.32

DIMENSIONS UNIT: MM/INCH

Weight: 30W: 5.29lbs
45W: 5.4lbs
60W: 5.73lbs



Weight: 90W: 6.195lbs

