

APPLICATIONS

Parking structures, storage areas, shopping area walkways, entryways, and low level security.

FEATURES

- Sealed die-casting prole for indoor and outdoor applications.
- Voltage is 120-277V & 347V-480V.
- Provide with a PIR sensor ideal for parking garage and optional with emergency battery.
- Replacing 100W MH.
- Operating temperature is -40°C to 40°C (-40°F to 113°F).
- UL wet location listed and DLC qualified.



HOUSING

One piece die cast housing better waterproofing ,suitable for both indoor and outdoor application.

MOUNTING BRACKET

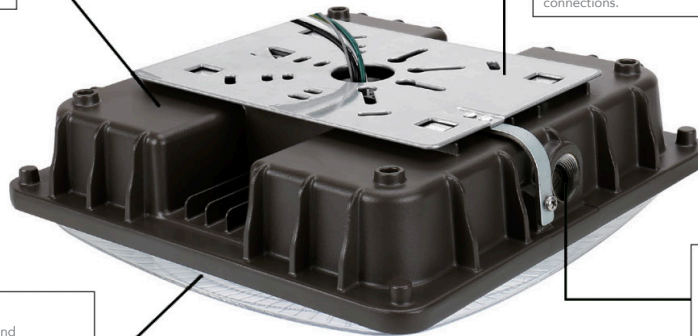
Suitable for J-BOX mounting, and easy for installation, also support pendant mounting, wires coming out from the back for easier wire connections.

PHOTOMETRY

Parking Garage Photometry and polycarbonate optical lens with heat resistance.

1/2 INCH KNOCK HOLE

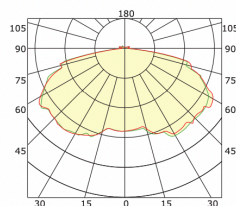
Support wires coming from the hole for easier wire connections. Optional PIR sensor and Emergency Battery.



PERFORMANCE DATA

SYSTEM WATTS	PHOTOMETRY	VOLTAGE	4000K(70CRI)		5000K(70CRI)	
			LUMENS	LPW	LUMENS	LPW
20W	Parking Garage	120-277VAC	2600lm	130lm/W	2600lm	130lm/W
27W	Parking Garage	120-277VAC	3750lm	139lm/W	3800lm	141lm/W
40W	Parking Garage	120-277VAC/347-480V	5350lm	134lm/W	5450lm	136lm/W
60W	Parking Garage	120-277VAC/347-480V	7800lm	133lm/W	8000lm	133lm/W

PHOTOMETRICS - PARKING GARAGE

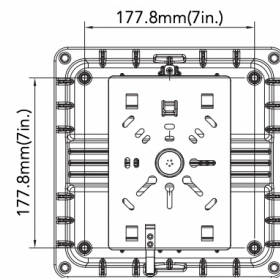
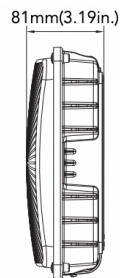
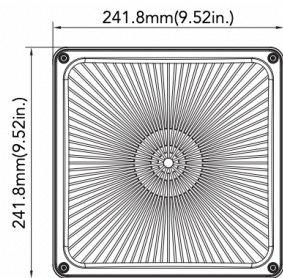


ELECTRICAL DATA

NUMBER OF DRIVERS	DRIVER CURRENT (MA)	NOMINAL POWER (W)	INPUT VOLTAGE (V)	CURRENT (AMPS)
1	740	20	120	0.17
		20	208	0.10
		20	240	0.08
		20	277	0.07
1	670	27	120	0.23
		27	208	0.13
		27	240	0.11
		27	277	0.10
1	980	40	120	0.33
		40	208	0.19
		40	240	0.17
		40	277	0.14
	1020	40	347	0.12
		40	480	0.08
1	1500	60	120	0.50
		60	208	0.29
		60	240	0.25
		60	277	0.22
	1600	60	347	0.17
		60	480	0.13

DIMENSIONS UNIT: MM/INCH

Net Weight:
20W: 3.536lbs
27W: 3.615lbs
40W: 4.166lbs



Net Weight:
60W: 5.070lbs

