

## FEATURES

- Default Wattage:
  - 2FT – 30W
  - 4FT – 50W
- Default CCT: 5,000K.
- IK10 & IP66 rating.
- NSF rated for splash zone.
- Glare-free / flicker-free lighting.
- Linkable design.
- 50,000 hours lifetime.

## SUITABLE APPLICATIONS

- Warehouses
- Schools
- Factories
- Offices
- Supermarkets
- Logistic Centers
- Exhibition Halls

### CONSTRUCTION

- PC housing and white cover with stainless steel clips.

### OPTICAL SYSTEM

- Lumiled 2835 LED chips. 110° beam angle.

### WARRANTY

- 5-year limited warranty. Actual performance may differ as a result of end-user environment and application.



### ELECTRICAL

- 120-277V input standard.
- -20°C to 40°C, -4°F to 104°F

### INSTALLATION AND MOUNTING

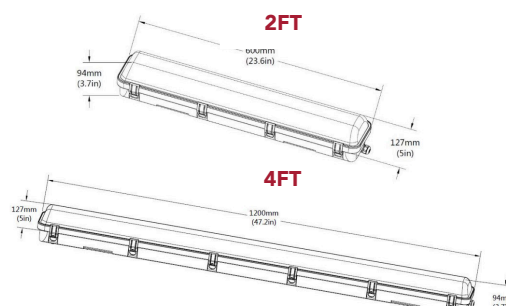
- Surface mount or suspension mount.

### CONTROLS AND DIMMING

- 0-10V dimming comes standard. Suitable for use with LED dimmers. Auxiliary 12V output.

SIZE	WATTAGE	LUMENS	EFFICACY	CRI	POWER FACTOR	THD	REPLACES
2FT	20W	2,738.2LM	136.91LM/W	81.7	0.9049	15.76%	2 17W LED tube
2FT	25W	3,422.75LM	136.91LM/W	81.7	0.9049	15.76%	2 17W LED tube
2FT	30W	4,086.6LM	136.91LM/W	81.7	0.9049	15.76%	2 32W LED tube
4FT	25W	3,395.75LM	135.83LM/W	81.7	0.9154	9.68%	2 17W LED tube
4FT	35W	4,754.05LM	135.83LM/W	81.7	0.9154	9.68%	2 17W LED tube
4FT	50W	6,775.3LM	135.83LM/W	81.7	0.9154	9.68%	2 32W LED tube

## DIMENSIONS



## MOUNTING OPTIONS



**SURFACE MOUNT**



**SUSPENSION KIT  
(NOT INCLUDED)**



**EMERGENCY BACK-UP**



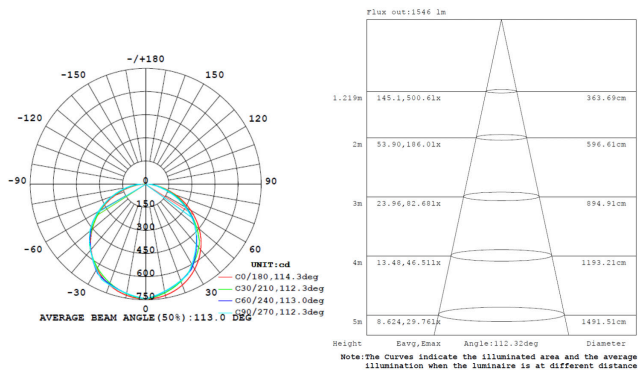
**SENSOR**



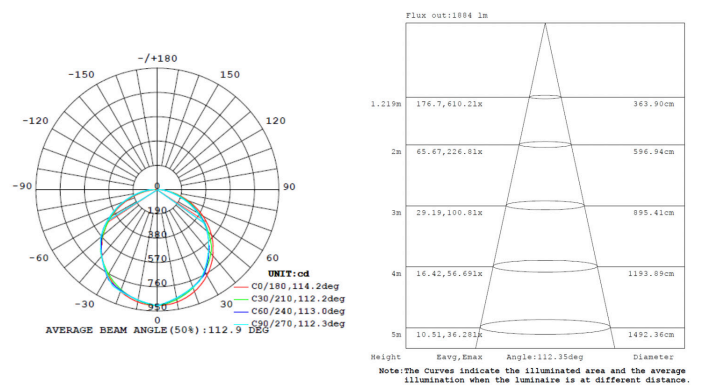
**REMOTE CONTROL**

## PHOTOMETRICS

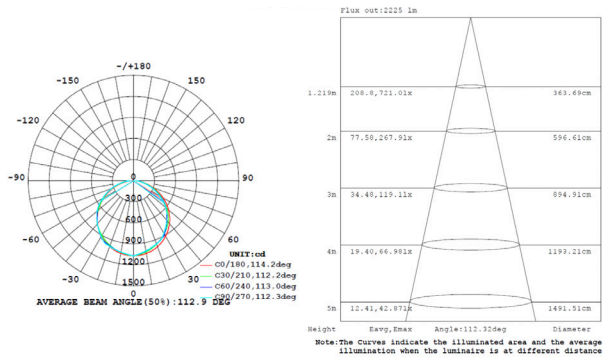
### 2FT 20W



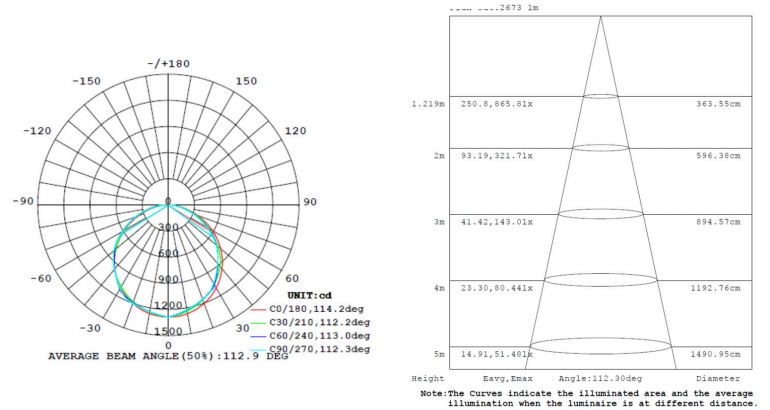
### 2FT 25W



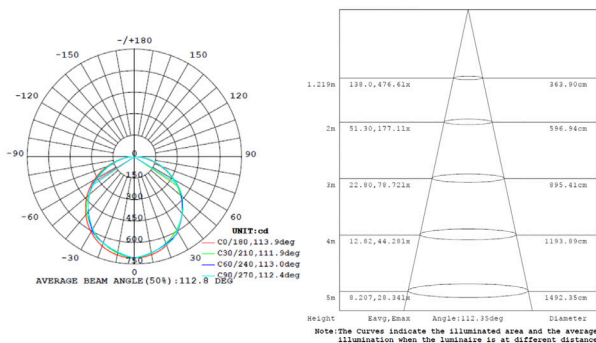
### 2FT 30W



### 4FT 25W



### 4FT 35W



### 4FT 50W

